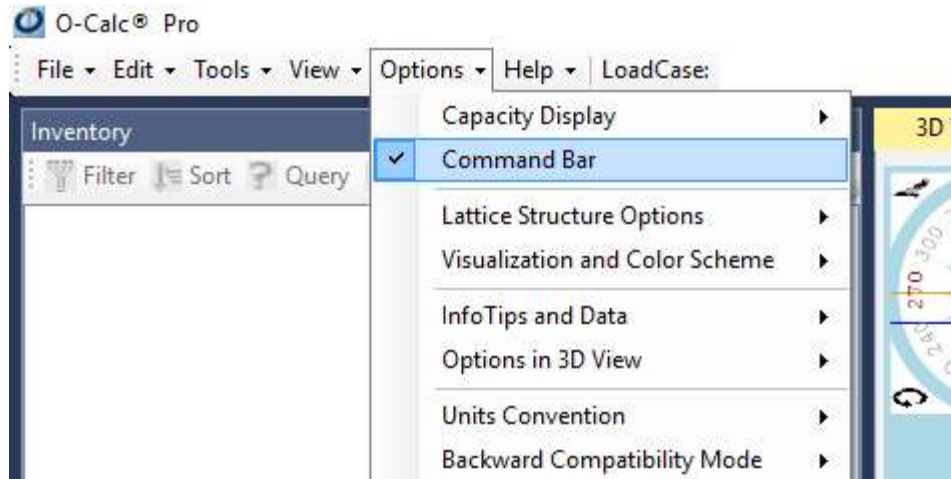


Using the Command Bar in O-Calc Pro LD

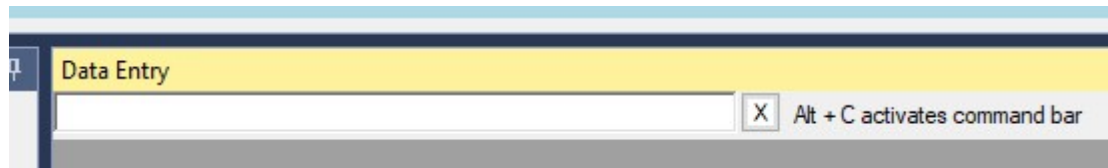
The command bar allows a large number of operations to be performed without using a mouse or trackpad. This can be very helpful for laptop users and can speed up certain operation.

Activating the Command Bar

The default command bar state can be controlled using the “Options >> Command Bar” menu option on the main screen.



This activates the command bar located at the top of the DEP window.



Regardless of the visibility of the command bar you can always activate it and prepare it for input using the keyboard shortcuts as follows:

Alt + C - Show the command bar and set focus to it (make it ready to receive keyboard input)

Shift + Alt + C – Hide the command bar.

Using these key combinations does not change the default state. It simply changes the immediate availability state of the command bar.

Using the Command Bar

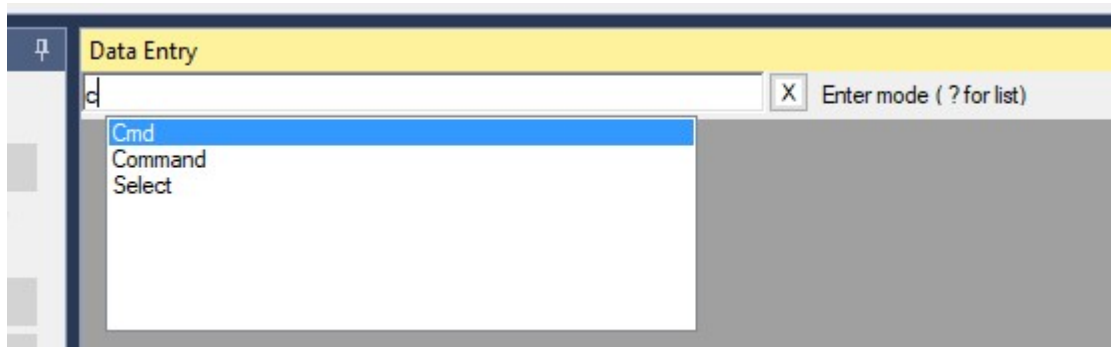
The command bar allows you to do any of the following:

- 1) Perform any menu operation on the main menu
- 2) Select element(s) from the model
- 3) Change attribute values on the currently selected element(s)
- 4) Perform operations on the currently selected element

Basics

As you type in the command bar the system will show possible commands or options that match the partial command or option you have entered up to that point.

To select one of the suggestions, use the up or down arrow to highlight the correct item and then press the **Tab** key. The highlighted suggestion will be placed in the correct spot on the command bar.



If you press **?** you will see the complete list of available commands

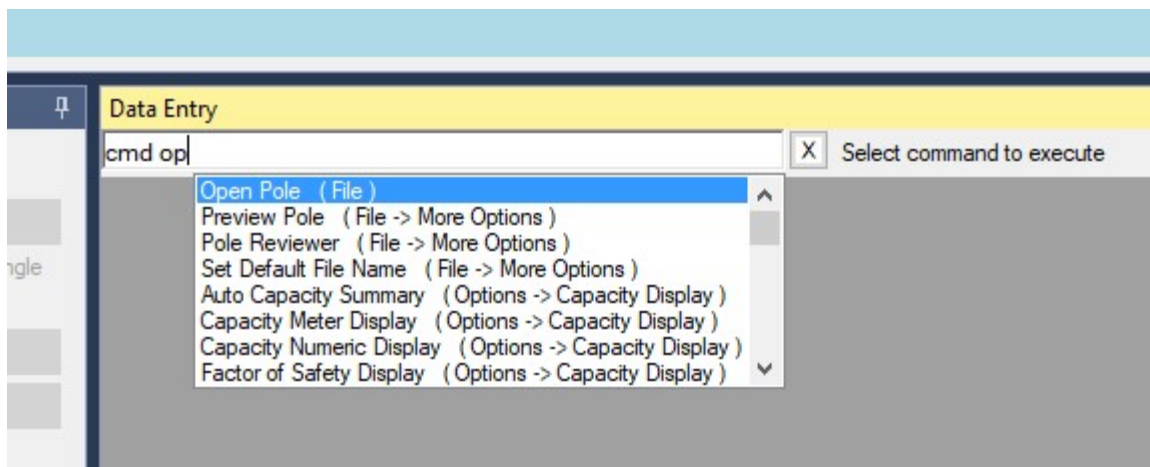
Pressing **Esc** will clear the entire command bar

Pressing **Alt + Backspace** will delete the options but leave the command in place

Menu Operation

To activate a menu command, enter "Command", "Cmd", or "Menu" or a portion thereof and press **Tab**.

The autocomplete list will then present you with a suggestion list of command that match your entered filter value.



Press **Tab** to highlight the desired option (or simply type the entire value minus the portion in parenthesis).

To Execute the menu operations on the Inventory pane enter “Inv” instead of “Menu”.

Once a valid command option has been entered pressing **Enter** will perform that menu operation. In all menu operation you can traverse any resulting dialogs using **Tab** and **Shift + Tab** , entering desired values, and then press **Enter** to execute the operation or **Esc** to cancel.

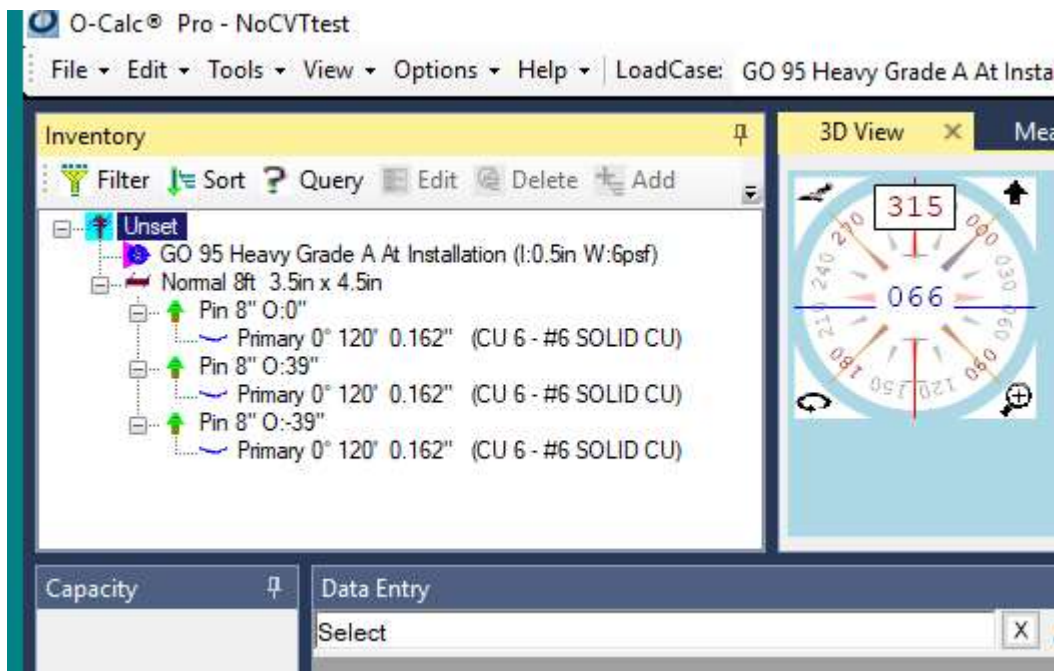
Typically, control will return to the command bar but on those occasions when it does not simply pressing **Alt + C** will return you to the command bar.

Selecting Elements

To select elements, enter the command “Select” into the command bar and press **Tab**. Focus will transfer to the inventory tree.

- 1) Traverse the tree using the up and down arrows.
- 2) Expand or collapse items in the tree using right or left arrows.
- 3) Holding shift allows you to select multiple items.

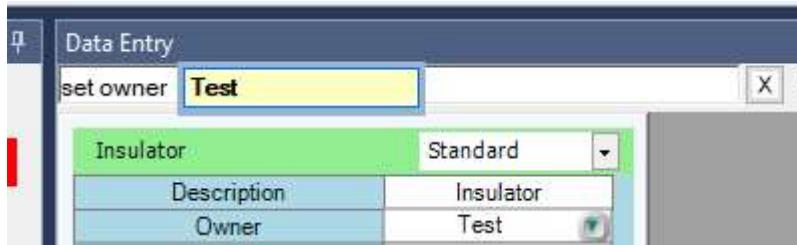
When your selection is complete press **Enter** to return to the command bar.



Changing Values

To change an attribute value enter the command “Set” or “Val” , select the attribute name to be changed and then press = and the same edit box or list that comes up in the DEP will be displayed inline in the command bar.

All of the same operation (Tip-, calculator, Ind, f'I", abs, and so on that you are used to using in the DEP are available in the command bar.

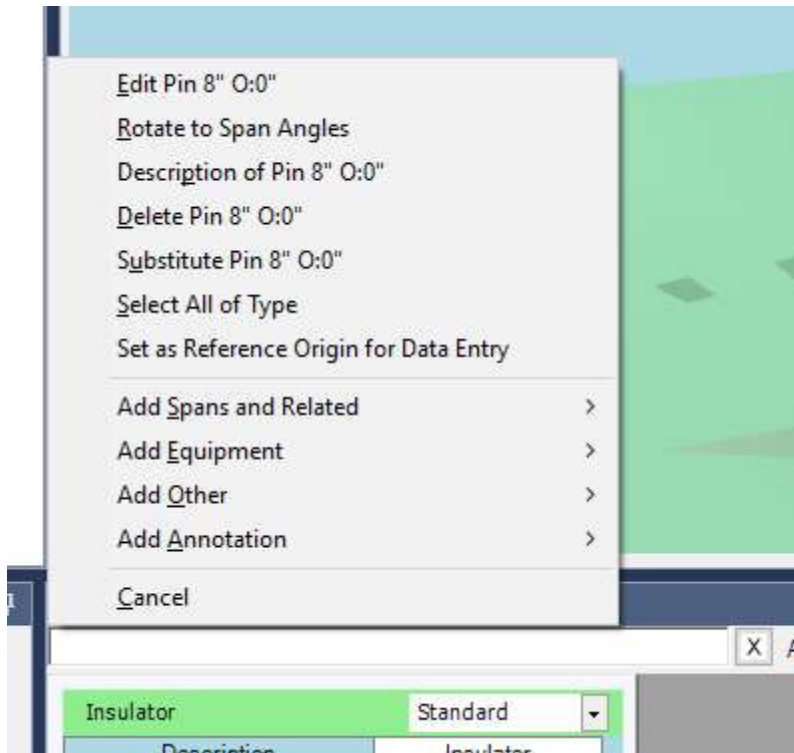


Context Menu

The context menu operation for the selected element (there must be only one element selected) is activated by pressing the **Menu** key.

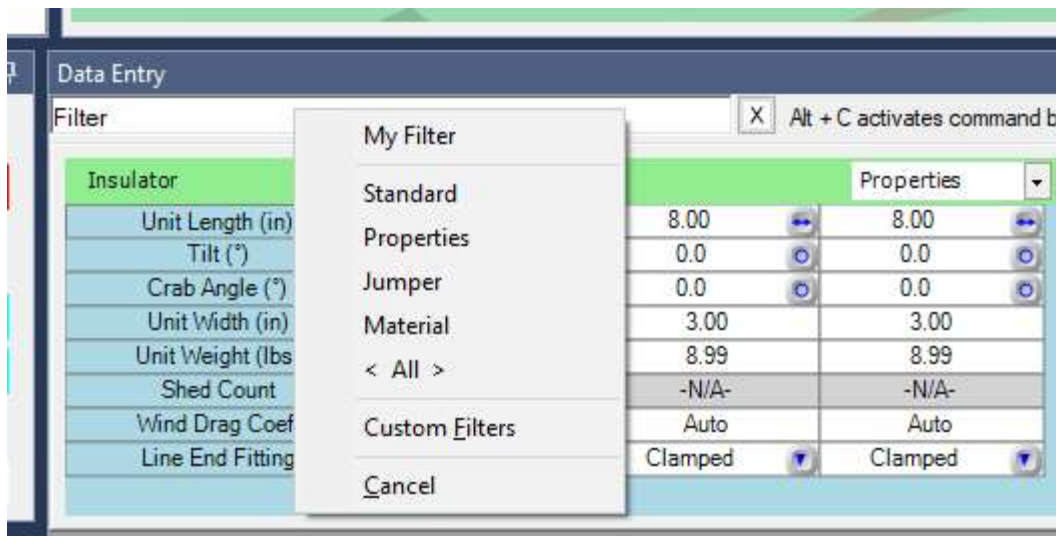


The same menu that comes up when you right click on an element in the inventory view or in the 3D view is displayed in the command bar region.



Setting the DEP Filter

To change the filter option of the currently selected DEP panel enter the command "Filter" and press **Tab** and select the desired filter.



Selecting Charts and Reports

To select the displayed chart or report enter “Chart” or “Report” press **Tab** and select the desired chart or report from the displayed list. Remember that the structure must be currently calculated in order to display charts or reports.

